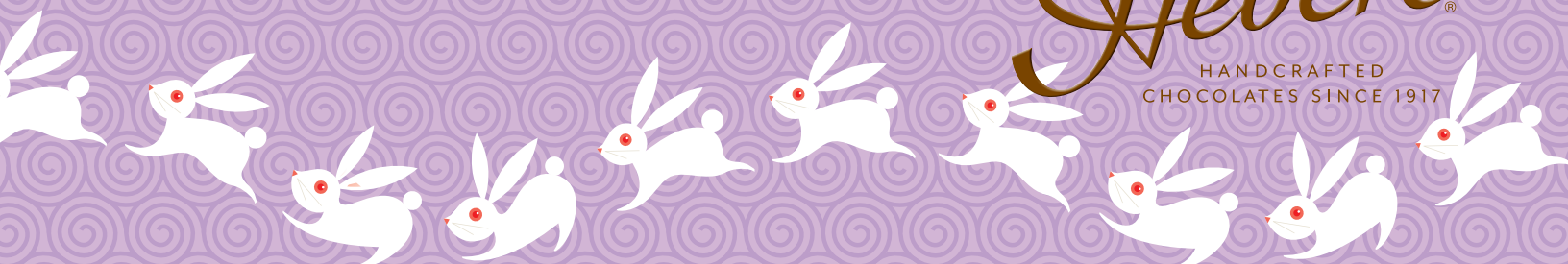


2011 Easter Holiday Specialties



Hebert has some special treats for Easter that are sure to have your stores hopping with excitement.

Hebert
HANDCRAFTED
CHOCOLATES SINCE 1917





Hebert is ready to fulfill all of your Easter holiday needs with our fine selection of premium milk, dark, and white chocolates. With a commitment to handcrafted quality that dates back to 1917, Hebert offers a wide selection of **Easter Holiday Specialties** to please every sweet tooth. Our mouth-watering creations look great in Easter baskets, just as the money will look great for your business. So be sure to have plenty of Hebert Easter Specialties in stock this holiday season. The Easter bunny only comes once this year!

PRODUCT DESCRIPTION	UNIT UPC	PRODUCT WEIGHT	CASE PACK	CASE CODE
BARS				
Milk Chocolate w/ Rice Crisp Bunny Bar	721605213755	2.00 oz	12	107623
Milk Chocolate (Holiday Wrap)	721605213779	3.25 oz	12	107625
GIFT BAGS				
Dark Chocolate Non Pareils (Pastel pink, blue & green seeds)	721605009280	6.0 oz	6	106773
Jelly Beans (Genuine Pectin)	721605009297	8.0 oz	6	106981
Easter Mix	721605213656	6.0 oz	6	107617
Chocolate-Covered Animal Crackers	721605213663	4.5 oz	6	107616
BOXED CHOCOLATES				
Special Easter bows and ribbons available for all boxed chocolates				
FUDGE				
Vanilla Cherry (Hand Cut)	721605213748	9.0 oz	12	107614
Vanilla Nut (Hand Cut)	721605213724	9.0 oz	12	107615
SPECIALTY ITEMS				
Milk Chocolate Wabbit	721605009600	2.0 oz	9	106787
Milk Chocolate Caramel-filled Wabbit	721605812200	2.0 oz	9	107600
Milk Chocolate Peanut Butter-filled Wabbit	721605812255	2.0 oz	9	107601
White Chocolate Wabbit	721605213649	2.0 oz	9	107602
Milk Chocolate Chocolate Butter Crème Egg	72160581045	4.0 oz	12	107611
Milk Chocolate Coconut Butter Crème Egg	72160581040	4.0 oz	12	107612
Milk Chocolate Vanilla Butter Crème Egg	72160581070	4.0 oz	12	107613
Milk Chocolate Easter Bunny Pop	721605813153	1.0 oz	24	106777
White Chocolate Easter Bunny Pop	721605813207	1.0 oz	24	106778
Milk Chocolate Non Pareil Pop (Pastel pink, blue & green seeds)	721605212727	2.0 oz	12	106807
Milk Chocolate Bunny (Solid)	721605213694	5.25 oz	6	107610
Dark Chocolate Bunny (Solid)	721605213670	5.25 oz	6	107609
White Chocolate Bunny (Solid)	721605213700	5.25 oz	6	107608
Milk Chocolate Bunny (Solid)	721605812057	15.5 oz	3	107605
Dark Chocolate Bunny (Solid)	721605812002	15.5 oz	3	107606
White Chocolate Bunny (Solid)	721605812101	15.5 oz	3	107607
Milk Chocolate Standing Bunny	721605814808	24 oz	1	103651
Dark Chocolate Standing Bunny	72160581490	24 oz	1	103649
White Chocolate Standing Bunny	721605814853	24 oz	1	101970
Hebert Easter Basket	721605213793	12.0 oz	1	107627



Customer Information

Order Minimums: \$150 net (not including freight and handling), reorders \$100. Hebert Confections does not offer split cases.

Terms: First order prepaid with company check or credit card (Visa, MasterCard or Discover). Net 30 terms given on orders greater than \$400 with credit approval on file. We do not offer COD; no reorders will be shipped until past due invoices are settled.

Holiday Packaging: We are offering Easter Holiday packaging (as pictured) for many of our products. Please specify "Easter Holiday" packaging or "Standard" packaging when you order. If no packaging preference is specified, your order will be shipped with "Easter Holiday" packaging.

EASTER HOLIDAY PACKAGING:

- **Boxed Chocolates:** Hebert Swirl-Motif Box with Easter Pastel Ribbon
- **Genevas:** Hebert Swirl-Motif Box with Easter Pastel Ribbon

SPECIALTY GIFT BAGS:

- **Holiday Non Pareils, Jelly Beans, Easter Mix, and Animal Crackers:** Clear Cello Bag with Easter Pastel Ribbon

STANDARD PACKAGING:

- **Boxed Chocolates & Genevas:** Hebert Swirl-Motif Box with Hebert Brown Signature Ribbon
- **Specialty Candy Gift Bags:** Clear Cello Bag with Hebert Brown Signature Ribbon

Shipping: All orders are FOB our dock, Shrewsbury, Massachusetts. UPS Ground shipping fees will be added to your invoice. In warm weather or when shipping to warm climates, we ship using insulated containers and ice; additional charges will apply.

Important Order Dates: Order Deadline for Easter products is March 15, 2011, for shipment March 15 through April 8, 2011; except for Butter Crème Eggs which will ship on April 15 due to 6-week shelf life (made with real butter).

Special Orders and Customized Candies

Hebert's offers bulk chocolates and fudge, customized chocolate bars, party and wedding favors. Please call us for details or ask your representative for more information.

Contact Information

Hebert Confections, LLC
575 Hartford Turnpike
Shrewsbury, Massachusetts 01545

PHONE 508.845.8051 Ext 221 or 223
TOLL FREE 866.432.3781 Ext 221 or 223
FAX 508.842.3065
WEB www.hebertcandies.com
EMAIL info@hebertcandies.com

